
TECHNICAL MANUAL

**OPERATOR'S, ORGANIZATIONAL, DIRECT SUPPORT
AND GENERAL SUPPORT MAINTENANCE
MANUAL INCLUDING REPAIR PARTS LIST
FOR**

**FORGE, COAL BURNING
MODEL 85
(NSN 3424-00-260-1037)
(BUFFALO FORGE COMPANY)**

**OPERATOR'S, ORGANIZATIONAL, DIRECT SUPPORT
AND GENERAL SUPPORT MAINTENANCE MANUAL
INCLUDING REPAIR PARTS LIST
FOR**

**FORGE, COAL BURNING
Model 85
NSN 3424-00-260-1037**

REPORTING OF ERRORS

You can help improve this manual. If you find any mistakes or if you know of a way to improve the procedures, please let us know. Mail your letter, DA Form 2028 (Recommended Changes to Publications and Blank Forms), or DA Form 2028-2, located in the back of this manual direct to: Commander, US Army Armament Materiel Readiness Command, ATTN: DRSAR-MAS, Rock Island, IL 61299. A reply will be furnished directly to you.

NOTE

This manual is published for the purpose of identifying an authorized commercial manual for the use of the personnel to whom this equipment is issued.

Manufactured by: Buffalo Forge Company
490 Broadway
Buffalo, NY 14204

Procured under Contract No. DAA09-75-MC-6765

This technical manual is an authentication of the manufacturers' commercial literature and does not conform with the format and content specified in AR 310-3, Military Publications. This technical manual does, however, contain available information that is essential to the operation and maintenance of the equipment.

**INSTRUCTIONS FOR REQUISITIONING PARTS
NOT IDENTIFIED BY NSN**

When requisitioning parts not identified by National Stock Number, it is mandatory that the following information be furnished the supply officer.

- 1 - Manufacturer's Federal Supply Code Number - 09519
- 2 - Manufacturer's Part Number exactly as listed herein.
- 3 - Nomenclature exactly as listed herein, including dimensions, if necessary.
- 4 - Manufacturer's Model Number - Model 85
- 5 - Manufacturer's Serial Number (End Item)
- 6 - Any other information such as Type, Frame Number, and Electrical Characteristics, if applicable.
- 7 - If DD Form 1348 is used, fill in all blocks except 4, 5, 6, and Remarks Field in accordance with AR 725-50.

Complete Form as Follows:

- (a) In blocks 4, 5, 6, list manufacturer's Federal Supply Code Number - 09519 followed by a colon and manufacturer's Part Number for the repair part.
- (b) Complete Remarks Field as follows:
 - Noun: (nomenclature of repair part)
 - For: NSN 3424-00-260-1037
 - Manufacturer: Buffalo Forge Company
490 Broadway
Buffalo, NY 14204
 - Model: 85
 - Serial: (of end item)
 - Any other pertinent information such as Frame Number, Type, Dimensions, etc.

Table of Contents

Subject	Page
Specifications	1, 2
Dimension Sheet	3
Wiring Diagram	4
Assembly dwg. (Forge) - 71)-6249	5, 6
Assembly (Telescopic Hood) - 71)-3535	7, 8, 9
Repair Parts List B/MS	10

Specifications for #85 Forges with 3T telescopic hoods.

Forge, Blacksmith, 36" round type, motor drive, $\frac{1}{8}$ HP, 3500 RPM, 115 volt, 60 cycle, AC, single phase induction type squirrel cage motor, manual starter, and separate telescopic hood.

DESCRIPTION -

The blacksmith forge is essentially of a 36 inch diameter round stationary forge, an electric motor driven blower and a telescopic hood.

MATERIAL -

Material is as specified herein. Material not definitely specified is of good commercial quality entirely suitable for its purpose. Material is free from all defects and imperfections that might affect the serviceability of the finished product.

STANDARD PRODUCTS -

The equipment is essentially the standard product of the manufacturer so that prompt and continuing service and delivery of spare parts may be assured. The component parts of the unit need not be the products of the same manufacturer.

SAFETY -

The forge is equipped with all the latest approved safety devices. Where practical, all moving parts which are hazardous to operating and other personnel are enclosed or otherwise guarded.

FORGE -

The forge is of the stationary round type with a flat bottom. The forge is constructed of steel plate not less than 0.1345" in thickness, and is rigidly stiffened and strengthened throughout. The hearth is constructed to allow a clay lining to be installed and is approximately 36" in diameter and 26 $\frac{1}{4}$ " high. The forge is equipped with an ash dumping tuyere with clinker breaking valve and blast gate. Controls for the tuyere are accessible and easily operated. A door is provided in the side of the forge for access to the blower.

BLOWER -

The blower is a high-speed, high-efficiency type with blades enclosed in a steel or cast iron removable housing with an integral nozzle for the attachment of an air pipe to the forge. The blower wheel is directly connected to a constant speed, continuous duty motor mounted on a substantial base. The blower has a capacity of not less than 200 c.f.m. under a static pressure of 1.30 inches of water at 70°F. and 29.92 inches of mercury barometric pressure when operating at 3000 R.P.M.

BLOWER MOTOR -

The blower motor is a continuous duty classification based on a 50°C. ambient temperature and class B insulation. It is of a size ($\frac{1}{8}$ H.P.) sufficient to efficiently drive the blower from a 115 volt, 60 cycle single phase power supply, with a maximum speed of 3600 r.p.m. The motor is provided with a thermal type overload device with a manual reset button. Heavy duty electric cable is used to connect the overload device to the motor.

HOOD -

The hood is separate from the forge and is in the form of a truncated cone. The hood is equipped with a telescopic vent pipe having a movement of approximately two feet. The hood and vent pipe are of adequate size to exhaust the products of combustion and is of heavy gage sheet steel with reinforced rims and edges. A system of counter weights is incorporated to facilitate raising and lowering the hood.

WATER TANK AND COAL BOX -

The forge is equipped with a sheet steel combination coal box and water tank. The unit conforms to the contour of the forge and is supported at a convenient working height. The bottom of the coal box is sloped and has a minimum capacity of 40 pounds of coal. The minimum water capacity is 10 gallons.

Illustration #2D-4932 is for the convenience of identification.

TROUBLESHOOTING -

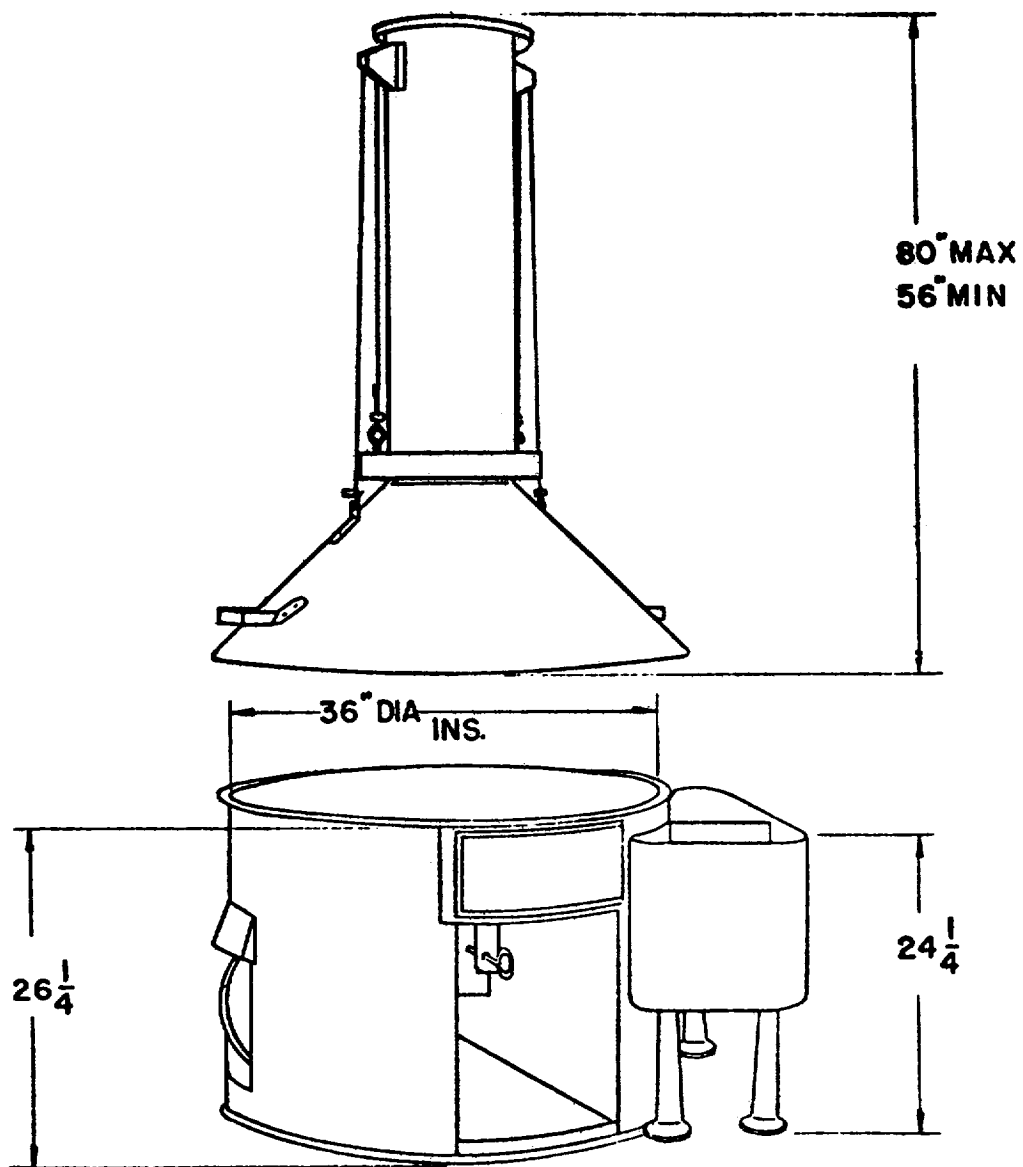
The motor is provided with a thermal overload device. Before pressing manual reset button, check motor for loose connection, check heavy duty electric cable for bare or worn spots and check to see that blower wheel is free turning.

Check hearth for hot spots - all hearths should be lined with fire clay to prevent burning through.

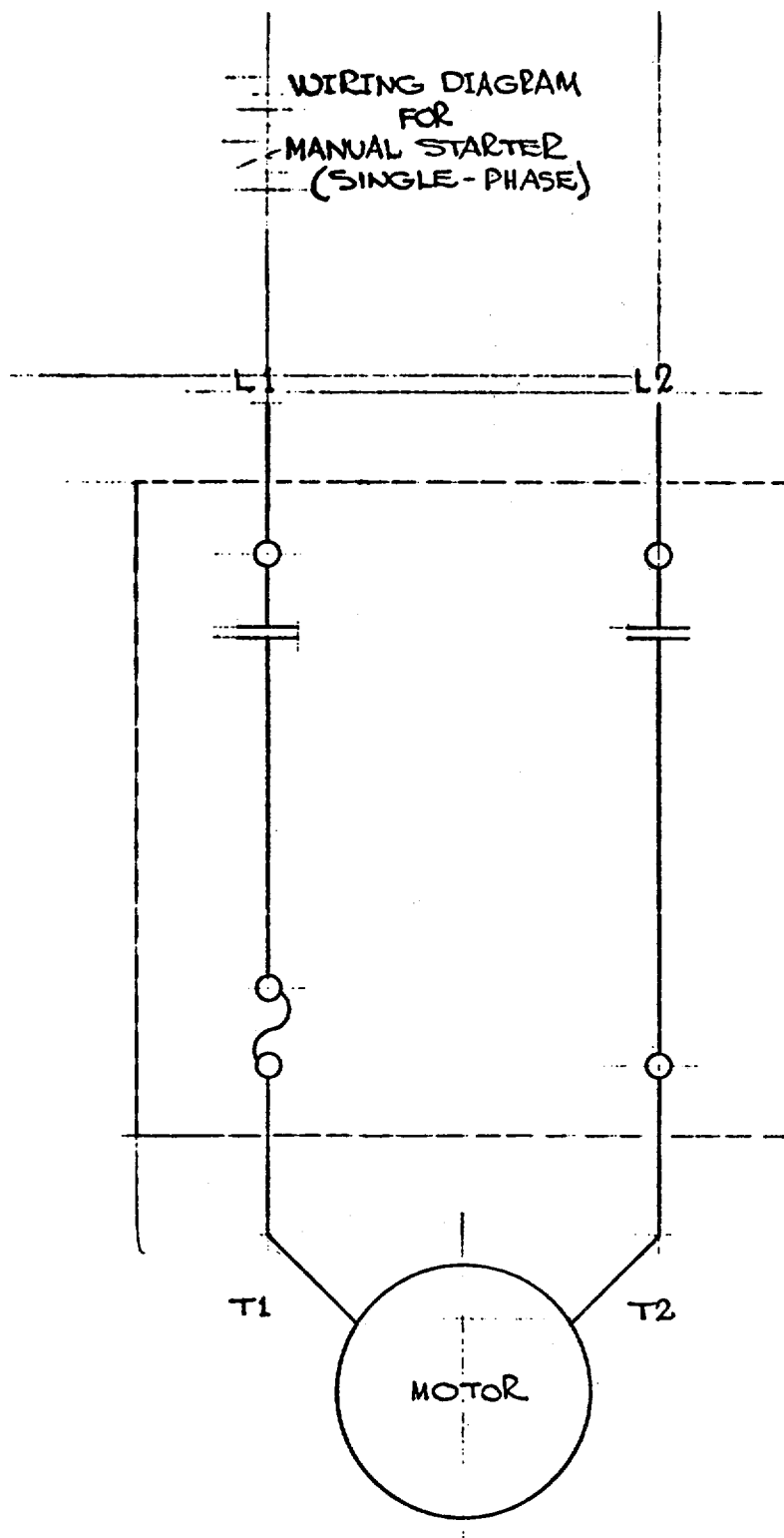
REPAIR -

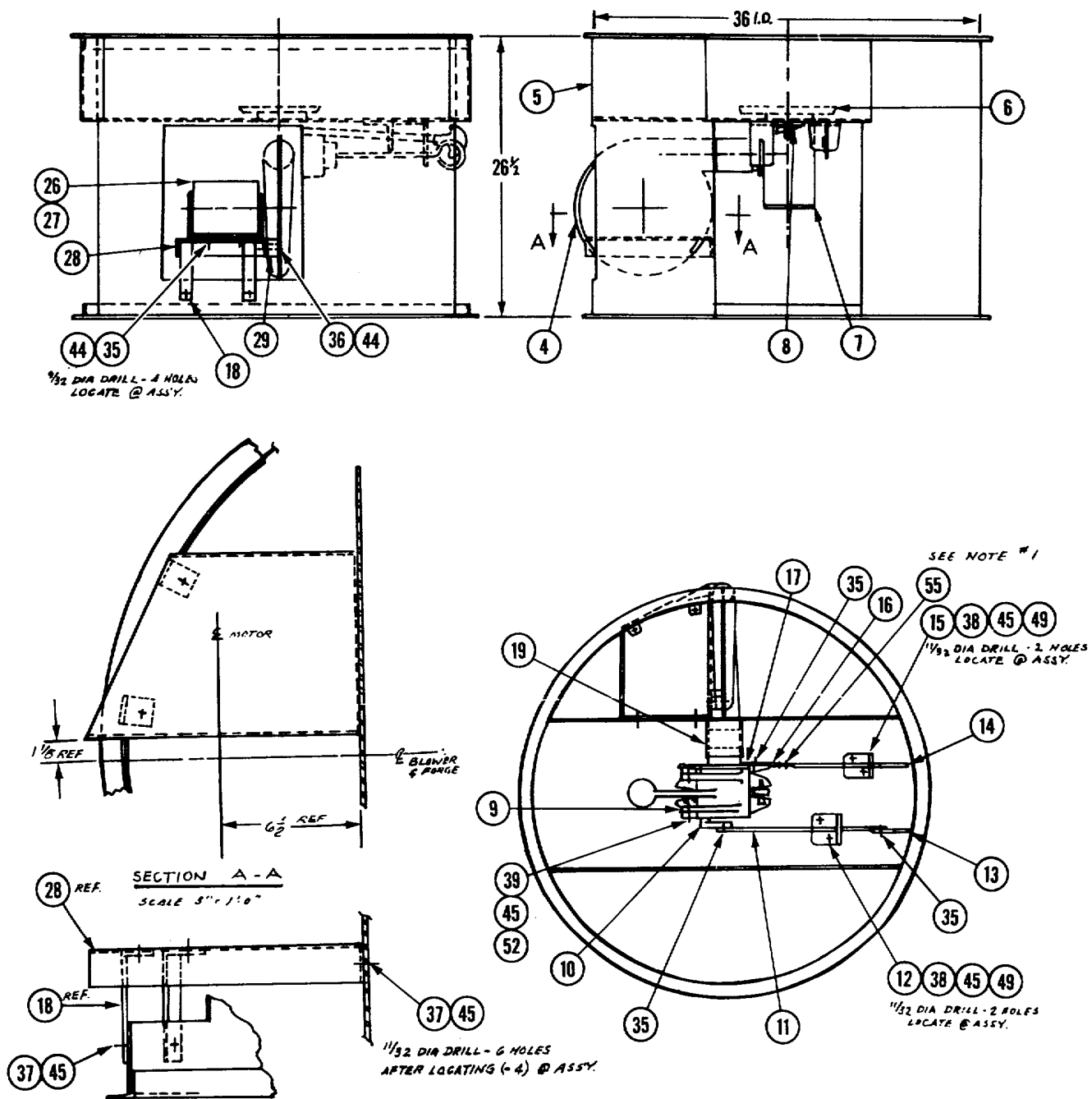
The forge proper and telescopic hood are made of standard heavy duty construction and will provide years of trouble-free service. If any repairs are required, refer to drawings 7D-6249, 7D-3535 and bill of material as provided in this manual.

#85 FORGE W/ TELESCOPIC HOOD



WIRING DIAGRAM
FOR
MANUAL STARTER
(SINGLE-PHASE)

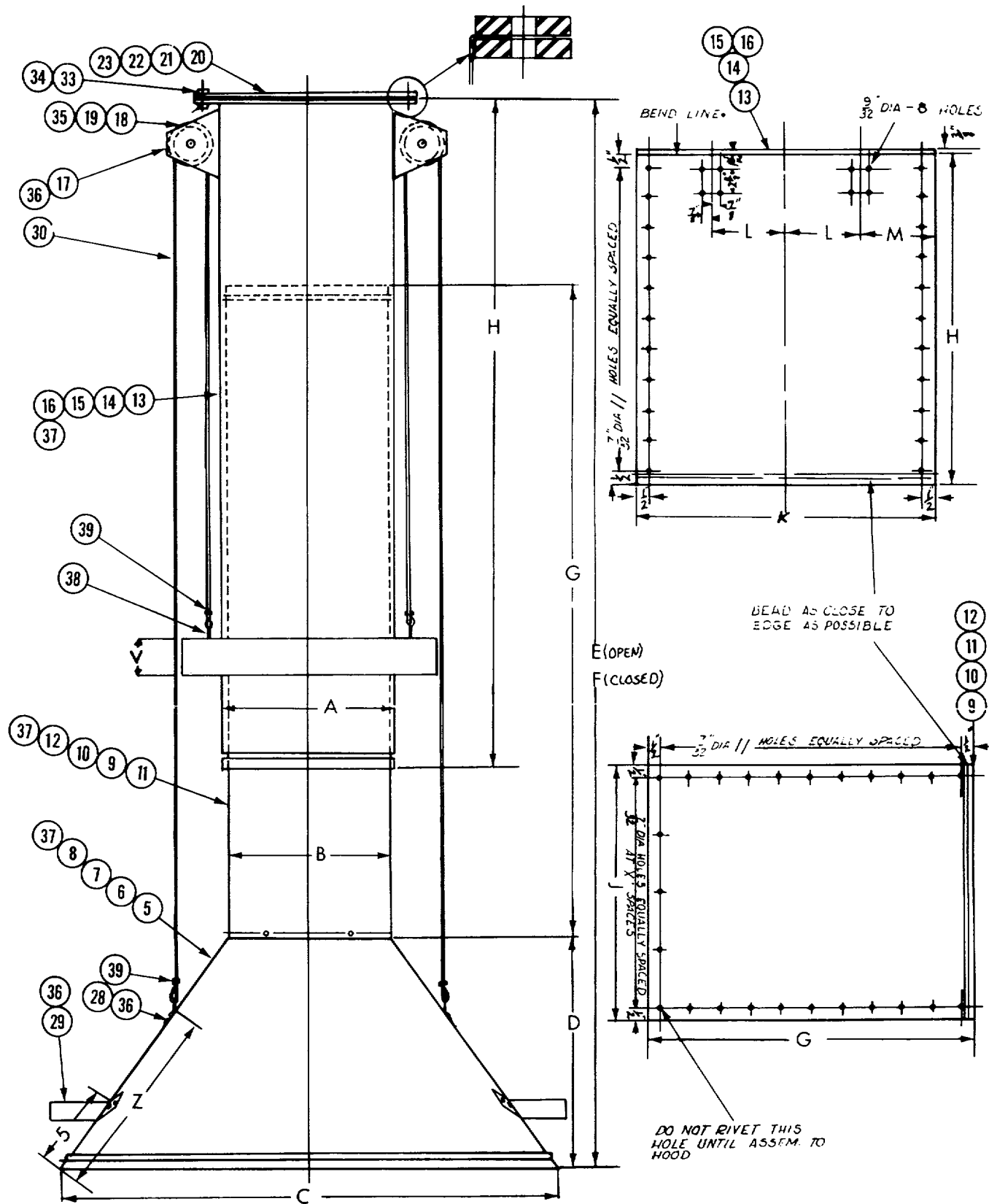


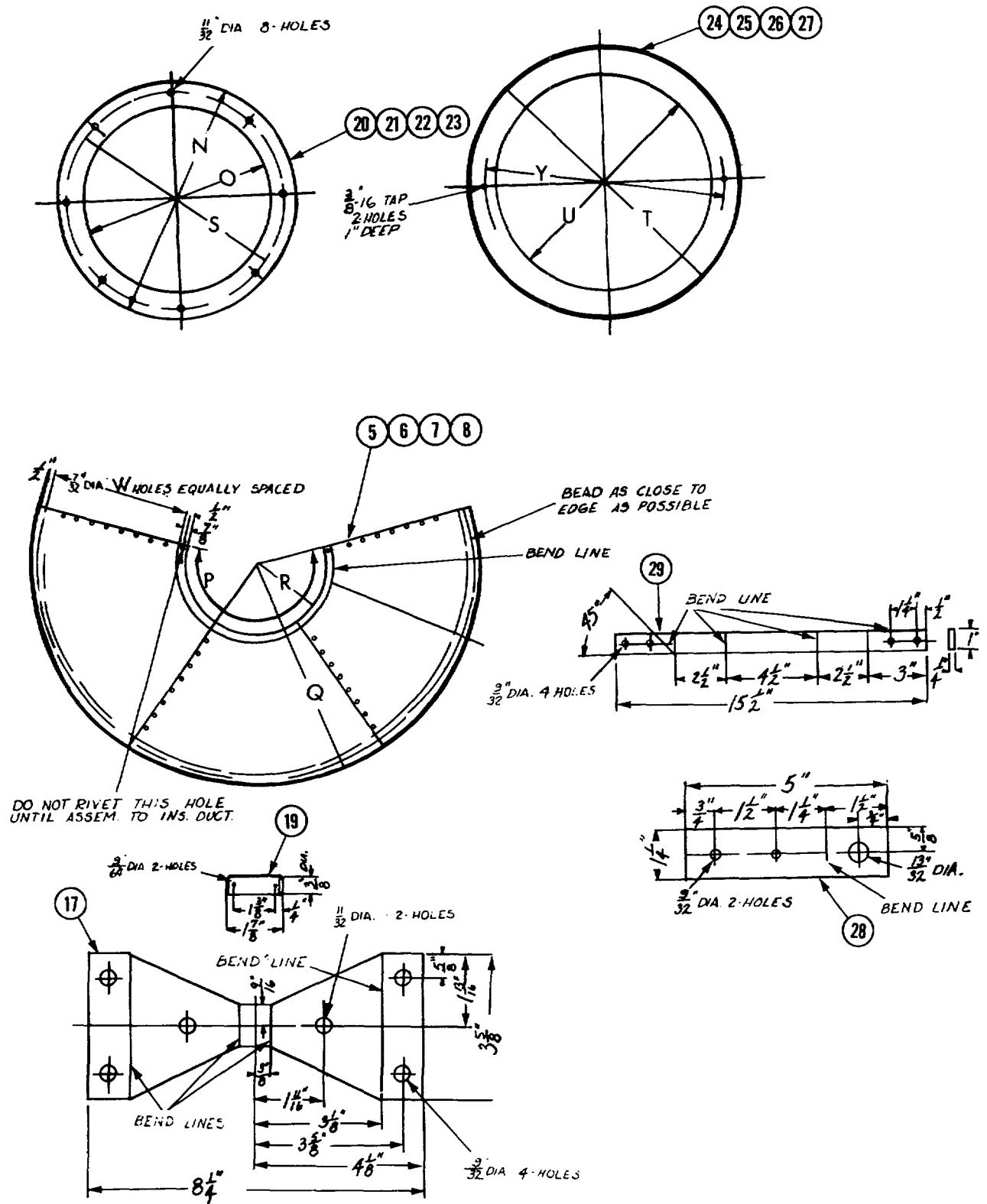


2. - ELECTRICALS PER ORDER

1. - INSERT LEVER (-14) THRU BRACKET (-15) BEFORE RIVETING TO (-16) SLIDE.

NOTES:





4	4	4	4	-39	CROSBY CLIPS		ST	
2	2	2	2	-38	EYE BOLTS	1/2" - 16" LG.	ST	
37	35	30	29	-37	RIVETS RD. HD.	1/2" DIA. x 1/2"	MOH. HRS	
20	20	20	20	-36	RIVETS RD. HD.	1/2" DIA. x 3/4"		
4	4	4	4	-35	COTTER PIN	3/8" x 1/2" LG.		
8	8	8	8	-34	HEX. NUT	3/4"		
8	8	8	8	-33	HEX. HD. BOLT	3/4" x 1"	MOH. HRS	
	2			-32	WIRE ROPE	3/8" DIA. x 80' LG.	ST	
		2		-31	WIRE ROPE	3/8" DIA. x 78" LG.	ST	
2		2		-30	WIRE ROPE	3/8" DIA. x 75" LG.	ST	
2	2	2	2	-29	HANDLE	1/2" x 1" x 15 1/2" LG.	MOH. HRS	
2	2	2	2	-28	CLIP	1/2" x 1 1/2" x 5" LG.	MOH. HRS	
1				-27	COUNTERWEIGHT	" 50	C.I.	
	1			-26	COUNTERWEIGHT	" 50	C.I.	
		1		-25	COUNTERWEIGHT	" 30	C.I.	
			1	-24	COUNTERWEIGHT		C.I.	
2				-23	FLANGE	1/2" x 1 1/2" x 43"	MOH. HRS	
	2			-22	FLANGE	1/2" x 1 1/2" x 39"		
		2		-21	FLANGE	1/2" x 1 1/2" x 36"		
			2	-20	FLANGE	1/2" x 1 1/2" x 33"	MOH. HRS	
2	2	2	2	-19	PULLEY SHAFT	1/2" DIA. x 1 1/2" LG.	MOH. CFS	
2	2	2	2	-18	PULLEY	11336-1 ITEM 2		
2	2	2	2	-17	PULLEY HOLDER	1/2" x 3 1/2" x 8 1/2"	MOH. HRS	
1				-16	OUT. DUCT	16 GA. x 36 1/2" x 38 1/2"		
	1			-15	OUT. DUCT	16 GA. x 35 1/2" x 38"		
		1		-14	OUT. DUCT	18 GA. x 32 1/2" x 37"		
			1	-13	OUT. DUCT	18 GA. x 29 1/2" x 35"		
1				-12	INS. DUCT	18 GA. x 34" x 36 1/2"		
	1			-11	INS. DUCT	16 GA. x 33 1/2" x 37"		
		1		-10	INS. DUCT	18 GA. x 30 1/2" x 36"		
			1	-9	INS. DUCT	18 GA. x 27 1/2" x 34"		
3				-8	HOOD SEGMENT	16 GA. x 34 1/2" x 34 1/2"		
	2			-7	HOOD SEGMENT	16 GA. x 28 1/2" x 25 1/2"		
		1		-6	HOOD SEGMENT	18 GA. 41 1/2" x 34 1/2"		
			1	-5	HOOD SEGMENT	18 GA. x 44" x 28 1/2"	MOH. HRS	
X				-4	ASSEM. #4T HOOD			
	X			-3	ASSEM. #3T HOOD			
		X		-2	ASSEM. #2T HOOD			
			X	-1	ASSEM. #1T HOOD			
REQ. PER ASSEM.				ITEM	TITLE	SIZE, PATT. DES. NO., COMM.	MATERIAL	
4	3	2	1		FORGESL			
ASSEMBLY NO.				NAME OF PART				TELESCOPIC HOODS

REF	SIZE	A	B	C	D	E	F	G	H	J	K	L	M	N	O	P	Q	R	S	T	U	V	W	X	Y	Z
-1	1T	9	8 3/8	26	12	77	50	34	35	27 1/2	29 1/2	7 1/16	7 3/16	11 7/8	9 1/8	212°-30	21 3/32	7 6/64	10 5/8				4	4		10 1/2
-2	2T	10	9 3/8	30	10	75	50	36	37	30 1/8	32 1/2	7 1/8	8 1/8	12 1/2	10 3/8	258°-30	20 3/32	6 17/32	11 1/8	13 1/8	10 5/8	1 1/8	5	4	12	10 1/2
-3	3T	11	10 3/8	40	15	80	56	37	38	33 3/8	35 1/2	8 1/8	9 1/8	13 1/8	11 3/8	253°	28 1/2	6 1/8	12 1/8	15 1/8	11 1/8	2 1/4	8	6	13	16 1/2
-4	4T	12	11 3/8	51	18	83	56 1/2	34	36	36 1/2	38 1/2	9 1/8	9 1/8	14 1/8	12 3/8	266°-30	34 1/2	7 1/16	13 3/8	16 1/8	12 1/8	2 1/4	10	6	14	23 1/2

BILL OF MATERIAL

ORDER NO.		PRODUCT								List No.		
75Y-1479		#3 Telescopic Hood for Forges								1917-3		
RELEASE DATE		NO. OF UNITS			MADE BY		CHECKED BY		DATE		SHEET 1	
8-26-75					LK				7-28-58		OF 2 SHEETS	
QTY	DRAWING NO.	Rev.	Ind.	Item	PART NAME	MATERIAL SIZE OR PATTERN NO.	MATERIAL SPECS.	MATERIAL CODE		WT. LESS SALVAGE		
1			1		General Assembly							
2												
3	1		2		Hood Assembly							
4												
5	2		3		Hood Segment	16Ga x 28-1 ¹ / ₂ x 25- ¹ / ₄	MOH-HRS					
6												
7	1		3		Duct-Inside	16Ga x 33-19/32 x 37	MOH-HRS					
8												
9	1		3		Duct-Outside	16Ga x 35- ¹ / ₂ x 38	MOH-HRS					
10												
11	2		3		Pulley Holder	1/8 x 3-5/8 x 8-1/4	MOH-HRS					
12												
13	2		3	18	Pulley-Item 2	2-1/4 Dia x 1	1213-CFS					
14												
15	2		3		Pulley-Shaft	3/8 Dia x 1-7/8	MOH-CFS					
16												
17	2		3		Flange	1/4 x 1-1/4 x 39-7/8	MOH-HRS					
18												
19	1		3		Counter Weight	#50	C.I.					
20												
21	1		3		Clip	1/8 x 1-1/4 x 5	MOH-HRS					
22												
23	2		3		Handle	1/4 x 1 x 15-1/2	MOH-HRS					
24												
25	2		3		Wire Rope	3/16 Dia x 80	St.					
26												
27					Beals, McCarthy Rogers	Catalog	Purch.					
28												
29												
30												
31												
32												
33												
34												
35												
36												
37												
38												

MATERIAL SIZE IN INCHES UNLESS OTHERWISE NOTED
 WEIGHT IN POUNDS UNLESS OTHERWISE NOTED

BILL OF MATERIAL

ORDER NO.		PRODUCT										List No.	
75Y-1479		#3 Telescopic Hood for Forges										1917-3	
RELEASE DATE		NO. OF UNITS			MADE BY		CHECKED BY		DATE		SHEET 2		
8-26-75					LK				7-28-58		OF 2 SHEETS		
QTY	DRAWING NO.	Rev.	Ind.	Item	PART NAME	MATERIAL SIZE OR PATTERN NO.	MATERIAL SPECS.	MATERIAL CODE			WT. LESS SALVAGE		
1 2	8		3	33	Bolt-Hex Hd	5/16 x 1	St.						
3 4	8		3	34	Nut-Hex	5/16	St.						
5 6	4		3	35	Cotter Pin	1/8 x 3/4	St.						
7 8	20		3	36	Rivet-Rd Hd	1/4 x 3/4	St.						
9 10	35		3	37	Rivet-Rd Hd	3/16 x 1/2	St.						
11 12	2		3	38	Eye Bolt	1/4-20 x 1	St.						
13 14	4		3	39	Crosby Clips	3/16	St.						
15 16					Beals, McCarthy Rogers	Catalog	Purch.						
17													
18													
19													
20													
21													
22													
23													
24													
25													
26													
27													
28													
29													
30													
31													
32													
33													
34													
35													
36													
37													
38													

MATERIAL SIZE IN INCHES UNLESS OTHERWISE NOTED
 WEIGHT IN POUNDS UNLESS OTHERWISE NOTED

BILL OF MATERIAL

ORDER NO.		PRODUCT								List No.		
75Y-1479		#885 Forge w/STD, #2 EH Blower								7D-6249-1		
RELEASE DATE		NO. OF UNITS			MADE BY		CHECKED BY		DATE		SHEET 1 OF 3 SHEETS	
8-26-75					J. Rybicki		L. Kingsley		2-10-71			
QTY	DRAWING NO.	Rev.	Ind.	Item	PART NAME	MATERIAL SIZE OR PATTERN NO.		MATERIAL SPECS.	MATERIAL CODE		WT. LESS SALVAGE	
1	7D-6249-1		1		Assem							
2												
3	7D-6249-4		2		Assem-Blower							
4												
5	7W-40409-6		2	24	Housing-Outside	16 Ga. x 18 x 18		Podd St				
6												
7	16319-1		2	25	Housing-Inside	Per List						
8												
9	E-51678-7		2	26	Assem-Wheel	Per List						
10												
11	7D-6249		2	27	Motor (Per Order)							
12												
13	5D-6245-1		2	28	Plate-Base	12 Ga. x 11-5/8 x 14-1/4		MOH-HRS				
14												
15	5D-6245-3		2	29	Spacer	5/8 x 1-1/8 x 1-3/4		MOH-HRS				
16												
17			2	33	Mach. Screw-Rd Hd	#10 x 3/8		ST				
18												
19			2	35	Capscrew-Hex Hd	1/4 x 5/8		ST				
20												
21			2	36	Capscrew-Hex Hd	1/4 x 2		ST				
22												
23			2	43	Nut-Hex	#10		ST				
24												
25			2	44	Nut-Hex	1/4		ST				
26												
27	19114		3	5	Assem-Fire Hearth							
28												
29	19114-1		4		Angle	1-1/4 x 1-1/4 x 1/8 x 123-1/2		ST				
30												
31	19114-2		4		Sheet	12 Ga. x 42-1/2 x 26		MOH-HRS				
32												
33												
34												
35												
36												
37												
38												

MATERIAL SIZE IN INCHES UNLESS OTHERWISE NOTED
 WEIGHT IN POUNDS UNLESS OTHERWISE NOTED

BILL OF MATERIAL

ORDER NO.		PRODUCT								List No.		
75Y-1479		#885 Forge w/STD, #2 EH Blower								7D-6249-1		
RELEASE DATE		NO. OF UNITS			MADE BY		CHECKED BY		DATE		SHEET 2	
8-26-75					J. Rybicki		L. Kingsley		2-10-71		OF 3 SHEETS	
QTY	DRAWING NO.	Rev.	Ind.	Item	PART NAME	MATERIAL SIZE OR PATTERN NO.	MATERIAL SPECS.	MATERIAL CODE		WT. LESS SALVAGE		
1 2	19114-3		4		Sheet	12 Ga. x 42-1/2 x 26	MOH-HRS					
3 4	19114-4		4		Sheet	12 Ga. x 34-1/2 x 19-1/2	MOH-HRS					
5 6	19114-5		4		Sheet	12 Ga. x 34-1/2 x 19-1/2	MOH-HRS					
7 8	19114-6		4		Sheet	12 Ga. x 36-1/4 x 25-1/8	MOH-HRS					
9 10	19114-7		4		Sheet	12 Ga. x 7-3/4 x 17-1/2	MOH-HRS					
11 12			4	11	Capscrew-Sq. Hd	1/4 x 1	ST					
13 14			4	12	Capscrew-Sq. Hd	3/8 x 1	ST					
15 16	19165		3	6	Plate-Tuyere	19165	C.I.					
17 18	19160		3	7	Pipe-Tuyere	19160	C.I.					
19 20	5D-6245-5		3	8	Wedge	12 Ga. x 1 x 3-1/4	MOH-HRS					
21 22	19176		3	9	Cover-Ash Pit	19176	C.I.					
23 24	19172		3	10	Plate-Perf. Tuyere	19172	C.I.					
25 26	5D-6245-4		3	12	Lever-Tuyere	3/16 x 1 x 17-1/2	MOH-HRS					
27 28	19217		3	12	Brkt-Tuyere	19217	C.I.					
28 30	19201		3	13	Grip-Tuyere	19201	C.I.					
31 32	18971		3	14	Lever-Blast Gate	3/8 Dia. x 18	ST					
33 34												
35 36												
37 38												

MATERIAL SIZE IN INCHES UNLESS OTHERWISE NOTED
 WEIGHT IN POUNDS UNLESS OTHERWISE NOTED

BILL OF MATERIAL

ORDER NO.		PRODUCT								List No.		
75Y-1479		#885 Forge w/STD, #2 EH Blower								7D-6249-1		
RELEASE DATE		NO. OF UNITS			MADE BY		CHECKED BY		DATE		SHEET 3	
8-26-75					J. Rybicki		L. Kingsley		2-11-71		OF 3 SHEETS	
QTY	DRAWING NO.	Rev.	Ind.	Item	PART NAME	MATERIAL SIZE OR PATTERN NO.	MATERIAL SPECS.	MATERIAL CODE		WT. LESS SALVAGE		
1 2	1		3	15	Brkt.-Blast Gate Lever	19224	C.I.					
3 4	1		3	16	Slide-Blast Gate	18 Ga. x 3-1/2 x 12-1/8	MOH-HRS					
5 6	1		3	17	Gate-Blast	18970	C.I.					
7 8	2		3	18	Brkt-Supp.	1/8 x 1-1/4 x 6-3/4	MOH-HRS					
9 10	1		3		Pipe	3 x Sch.40 x 4 (Both Ends Plain)	ST					
11 12	6		3	35	Capscrew-Hex Hd	1/4 x 5/8	ST					
13 14	6		3	37	Capscrew-Hex Hd	5/16 x 3/4	ST					
15 16	4		3	38	Capscrew-Hex Hd	5/16 x 1-1/4	ST					
17 18	2		3	39	Capscrew-Hex Hd	5/16 x 1-3/4	ST					
19 20	12		3	45	Nut-Hex	5/16	ST					
21 22	4		3	49	Washer-Flat	5/16	ST					
23 24	2		3	52	Lockwasher	5/16	ST					
25 26	2		3	55	Rivet-Rd Hd	1/8 x 3/8	ST					
27												
28												
28												
30												
31												
32												
33												
34												
35												
36												
37												
38												

MATERIAL SIZE IN INCHES UNLESS OTHERWISE NOTED
 WEIGHT IN POUNDS UNLESS OTHERWISE NOTED

BILL OF MATERIAL

ORDER NO.		PRODUCT										List No.	
75Y-1479		Blast Wheel Hub #200 Hand Blower										16301-3	
RELEASE DATE		NO. OF UNITS			MADE BY			CHECKED BY		DATE		SHEET 1	
8-26-75					M. Milley			D. Fron		7-25-67		OF 1 SHEETS	
QTY	DRAWING NO.	Rev.	Ind.	Item	PART NAME	MATERIAL SIZE OR PATTERN NO.	MATERIAL SPECS.	MATERIAL CODE			WT. LESS SALVAGE		
1	16301-3	A			Hub	1" Dia x 15/16	1213 CFS	1010	57	67	209		
2													
3													
4													
5													
6													
7													
8													
9													
10													
11													
12													
13													
14													
15													
16													
17													
18													
19													
20													
21													
22													
23													
24													
25													
26													
27													
28													
29													
30													
31													
32													
33													
34													
35													
36													
37													
38													

MATERIAL SIZE IN INCHES UNLESS OTHERWISE NOTED
 WEIGHT IN POUNDS UNLESS OTHERWISE NOTED

BILL OF MATERIAL

ORDER NO. 75Y-1479		PRODUCT Blast Wheel Hub #200 Hand Blower								List No. 16319-1		
RELEASE DATE 8-26-75		NO. OF UNITS			MADE BY M. Milley		CHECKED BY D. Fron		DATE 7-25-67		SHEET 1 OF 1 SHEETS	
QTY	DRAWING NO.	Rev.	Ind.	Item	PART NAME	MATERIAL SIZE OR PATTERN NO.	MATERIAL SPECS.	MATERIAL CODE			WT. LESS SALVAGE	
1	16319-1	A	3		Housing	16 Ga. x 18 x 18	St.	1010	137	05	.64	
2							P.O.D. D.					
3												
4												
5												
6												
7												
8												
9												
10												
11												
12												
13												
14												
15												
16												
17												
18												
19												
20												
21												
22												
23												
24												
25												
26												
27												
28												
29												
30												
31												
32												
33												
34												
35												
36												
37												
38												

MATERIAL SIZE IN INCHES UNLESS OTHERWISE NOTED
 WEIGHT IN POUNDS UNLESS OTHERWISE NOTED

BILL OF MATERIAL

ORDER NO.		PRODUCT							List No.				
75Y-1479		7-1/2" Wheel Assembly 2 VEH Reversible Blower							E-51678-7				
RELEASE DATE		NO. OF UNITS			MADE BY		CHECKED BY		DATE		SHEET 1		
8-26-75					J. Rybicki		L. Kingsley		2-10-71		OF 1 SHEETS		
QTY	DRAWING NO.	Rev.	Ind.	Item	PART NAME	MATERIAL SIZE OR PATTERN NO.		MATERIAL SPECS.	MATERIAL CODE			WT. LESS SALVAGE	
1	1	E-51678-7	J	3		Assem.							
2	1	E-51678-10		4		Wheel		Per List					
3	1	16301-3		4		Hub		Per List					
4	1	H		4		Setscrew-Sock Hd	1/4 x 1/4	Cup Pt	ST				
5													
6													
7													
8													
9													
10													
11													
12													
13													
14													
15													
16													
17													
18													
19													
20													
21													
22													
23													
24													
25													
26													
27													
28													
29													
30													
31	1	E-51678-7		4		Hdwe				3			
32	1	E51678-7		4		Paint Fan Gray Enamel				56144	102	.001	
33													
34													
35													
36													
37													
38													

MATERIAL SIZE IN INCHES UNLESS OTHERWISE NOTED
 WEIGHT IN POUNDS UNLESS OTHERWISE NOTED

BILL OF MATERIAL

ORDER NO.		PRODUCT										List No.	
75Y-1479		9" Dia. Wheel Less Hub "E" & "EH" Blower										E51678-10	
RELEASE DATE		NO. OF UNITS			MADE BY			CHECKED BY		DATE		SHEET 1	
8-26-75					D. Fron			L. Kingsley		10-4-65		OF 1 SHEETS	
QTY	DRAWING NO.	Rev.	Ind.	Item	PART NAME	MATERIAL SIZE OR PATTERN NO.	MATERIAL SPECS.	MATERIAL CODE			WT. LESS SALVAGE		
1	E-51678-10	J			Wheel U/E	16GA x 9-1/2 x 9-1/2	MOH-HRS	1010	12	38	.78		
2													
3													
4													
5													
6													
7													
8													
9													
10													
11													
12													
13													
14													
15													
16													
17													
18													
19													
20													
21													
22													
23													
24													
25													
26													
27													
28													
29													
30													
31													
32													
33													
34													
35													
36													
37													
38													

MATERIAL SIZE IN INCHES UNLESS OTHERWISE NOTED
 WEIGHT IN POUNDS UNLESS OTHERWISE NOTED

By Order of the Secretary of the Army:

Official:

E. C. MEYER
General, United States Army
Chief of Staff

ROBERT M. JOYCE
Brigadier General, United States Army
The Adjutant General

RECOMMENDED CHANGES TO EQUIPMENT TECHNICAL PUBLICATIONS



THEN... JOT DOWN THE DOPE ABOUT IT ON THIS FORM. CAREFULLY TEAR IT OUT. FOLD IT AND DROP IT IN THE MAIL!

SOMETHING WRONG WITH THIS PUBLICATION?

FROM: (PRINT YOUR UNIT'S COMPLETE ADDRESS)

Your mailing address

DATE SENT

Date you filled out form.

PUBLICATION NUMBER

TM 9-XXXX-XXX-XX

PUBLICATION DATE

Date of TM

PUBLICATION TITLE

Title of TM

BE EXACT... PIN-POINT WHERE IT IS

PAGE NO	PARA-GRAPH	FIGURE NO	TABLE NO
---------	------------	-----------	----------

400

183

512

191

IN THIS SPACE TELL WHAT IS WRONG AND WHAT SHOULD BE DONE ABOUT IT:

Change illustration. Reason: Tube end shown assembled on wrong side of lever cam.

Figure 191, item 3 has the wrong NSN. Supply rejects orders for this item. The NSN shown here is not listed in the AMDF or the MCRL.

Please give us the correct NSN and P/N.

SAMPLE

TEAR ALONG PERFORATED LINE

PRINTED NAME, GRADE OR TITLE, AND TELEPHONE NUMBER

John Smith, S. SGT.

793/XXXX

SIGN HERE

John Smith

DA FORM 2028-2 JUL 79

PREVIOUS EDITIONS ARE OBSOLETE.

U.S.—IF YOUR OUTFIT WANTS TO KNOW ABOUT YOUR RECOMMENDATION MAKE A CARBON COPY OF THIS AND GIVE IT TO YOUR HEADQUARTERS.

REVERSE OF DA FORM 388-2

FILL IN YOUR
UNIT'S ADDRESS

FOLD BACK

DEPARTMENT OF THE ARMY

Commander
US Army Armament Materiel Readiness Command
ATTN: DRSAR-MAS
Rock Island, IL 61299

TEAR ALONG PERFORATED LINE

RECOMMENDED CHANGES TO EQUIPMENT TECHNICAL PUBLICATIONS



THEN... JOT DOWN THE DOPE ABOUT IT ON THIS FORM, CAREFULLY TEAR IT OUT, FOLD IT AND DROP IT IN THE MAIL!

SOMETHING WRONG WITH THIS PUBLICATION?

FROM: (PRINT YOUR UNIT'S COMPLETE ADDRESS)

DATE SENT

PUBLICATION NUMBER

TM 9-3424-220-14&P

PUBLICATION DATE

6 Nov 81

PUBLICATION TITLE

Forge, Coal Burning Model 85

BE EXACT... PIN-POINT WHERE IT IS

PAGE NO	PARA-GRAPH	FIGURE NO	TABLE NO
---------	------------	-----------	----------

IN THIS SPACE TELL WHAT IS WRONG AND WHAT SHOULD BE DONE ABOUT IT:

TEAR ALONG PERFORATED LINE

PRINTED NAME, GRADE OR TITLE, AND TELEPHONE NUMBER

SIGN HERE:

DA FORM 2028-2
1 JUL 79

PREVIOUS EDITIONS ARE OBSOLETE.

P.S.-IF YOUR OUTFIT WANTS TO KNOW ABOUT YOUR RECOMMENDATION MAKE A CARBON COPY OF THIS AND GIVE IT TO YOUR HEADQUARTERS.

REVERSE OF DA FORM 388-2

FILL IN YOUR
UNIT'S ADDRESS

FOLD BACK

DEPARTMENT OF THE ARMY

Commander
US Army Armament Materiel Readiness Command
ATTN: DRSAR-MAS
Rock Island, IL 61299

TEAR ALONG PERFORATED LINE

